

# Vessel Specifications



RIB & Powerboat Charters  
Corporate Entertainment  
Team Building  
Sight Seeing Tours

Commercial Charters  
Workboats, Safety Boats, Guard Boats  
Survey Boats, Landing Craft, Crew Transfer  
Film & Media, Photography, Drone Platform  
Cable Lay Support, Windfarm Support, Dive Support

Pontoon/Work Platform Hire and Water Access Solutions  
Crane Pontoon, Marine Civils, Spud Leg Pontoons, Work Over Water



07495 234444

info@rebelmarine.co.uk

www.rebelmarine.co.uk





# OUR FLEET



**Rebel Anchorman**

10m Multi Role Catamaran



**Rebel Protector**

9m Cabin RIB



**Specialist Plant**

Hybrid & electric tracked plant



**Beach Rebel**

7m Open RIB



**Rebel Rescue**

5.5m Open RIB - Safety/Rescue Boat



**Rebel Lander**

7m Aluminium Landing Craft



**Rebel Defender**

6m Aluminium Safety/Work Boat



**Rebel Six**

5m Aluminium Safety/Work Boat



**Rebel Five**

5m Aluminium Safety/Work Boat



**Rebel Four**

4m Aluminium Safety/Work Boat



**Rigiflex 400**

4m Safety/Work Boat



**Crane Trailer**

Compact, Lightweight, Powerful



**Rigiflex 360**

3.6m Safety/Work Boat



**Modular Pontoon**

Built to any size and shape



**Crane Pontoon**

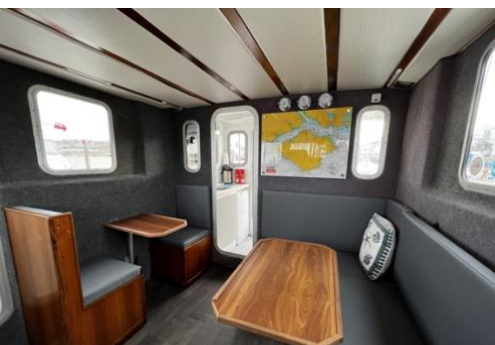
Modular Crane Pontoon



# REBEL ANCHORMAN 10m Multi Role Catamaran



General	
<b>Vessel Name</b>	Rebel Anchorman
<b>Coding</b>	MCA Category 2 – 60 miles day & night
<b>Call Sign</b>	MEKR5
<b>MMSI</b>	235016877
<b>Capacity</b>	12 PAX + 2 Crew + 1000KG Cargo
<b>LOA</b>	10m
<b>Beam</b>	4.9m
<b>Draught</b>	0.8m
<b>Machinery</b>	2 x Iveco 280HP
<b>Fuel</b>	Diesel 1000L
<b>Manufacturer</b>	Blyth Catamarans
<b>Speed Cruise/Max</b>	15/27 Knots



Equipment	
<b>Layout</b>	Rescue Zone with MOB recovery cradle
	Full walk-around deck with mooring/towing bollards
	Large open aft deck - cargo area & mounting points
	Side door with dive ladder
<b>Navigation/ Comms</b>	3 x Simrad 12" & 7" touch screen plotters / sonar
	1 x Simrad 16" display & Simrad autopilot system
	Simrad open array halo radar
	Simrad RS40 fixed VHF/DSC & Icom fixed VHF/DSC
	Simrad wind system & 3 x digital instrument displays
	Simrad class A AIS Transponder
	Fusion stereo system & Loud hailer/siren system
<b>Electrical / Welfare</b>	CCTV Camera System
	Galley unit - microwave - oven/stove - hot/cold water
	Toilet and wash basin
	Heating, diesel and electric
	240V Generator & Inverter
	LED navigation, deck lights and blue strobe lights
<b>Optional Extras</b>	LED cabin lights white/red
	Survey boom
	Rescue boat/tender

07495 234444

info@rebelmarine.co.uk

www.rebelmarine.co.uk





# REBEL PROTECTOR

8.5m Cabin Rib



General	
<b>Vessel Name</b>	Rebel Protector
<b>Coding</b>	MCA Category 3 – 20 miles day & night
<b>Call Sign</b>	MICH3
<b>MMSI</b>	232029921
<b>Capacity</b>	7 PAX + 1 Crew
<b>LOA</b>	8.5m
<b>Beam</b>	3m
<b>Draught</b>	0.8m
<b>Machinery</b>	1 x Yanmar 6LP 315HP
<b>Fuel</b>	Diesel 300L
<b>Manufacturer</b>	Rayglass NZ
<b>Speed Cruise/Max</b>	25/39 Knots



## Equipment

<b>Layout</b>	MOB recovery cradle
	Forward deck access door
	Large foredeck with towing bollard
	Large open aft deck with bollards & mounting points
	Bathing platform with dive ladder
<b>Navigation/ Comms</b>	2 x Simrad 9" touch screen plotter / sonar
	Simrad 4G Radar
	Simrad RS40-B fixed VHF/DSC
	Simrad RS40-B AIS Transponder
	Icom M330GE fixed VHF/DSC
	Fusion Stereo System
	Loud hailer/siren system
<b>Electrical / Welfare</b>	LED navigation and deck lights
	LED cabin lights white/red
	LED blue strobe light
	Heads
<b>Optional Extras</b>	Survey boom
	Generator
	Recovery Davit
	Rescue boat/tender



07495 234444

info@rebelmarine.co.uk

www.rebelmarine.co.uk





# Ballena

Owned by Charterdays

13m Luxury Cruiser



General	
<b>Vessel Name</b>	Ballena
<b>Coding</b>	MCA Category 2 – 60 miles day & night
<b>Call Sign</b>	
<b>MMSI</b>	
<b>Capacity</b>	12 PAX + 2 Crew
<b>LOA</b>	13m
<b>Beam</b>	3.5m
<b>Draught</b>	1.5m
<b>Machinery</b>	2 x Volvo Penta 370HP
<b>Fuel</b>	Diesel 800L
<b>Manufacturer</b>	Fairline
<b>Speed Cruise/Max</b>	18/28 Knots



Equipment	
<b>Layout</b>	Outdoor and indoor seating with tables
	Large rear sunpad
	Sunbed and lounge area on front deck
	Bathing platform with ladder
<b>Navigation/ Comms</b>	Raymarine 12" plotter / sonar
	Raymarine autopilot system
	Raymarine Radar
	Raymarine fixed VHF/DSC
	Raymarine data pack instruments
<b>Electrical / Welfare</b>	Galley unit - microwave - oven/stove - hot/cold water
	Heads and wash basin
	Heating
	240V Shore Power
	Navigation and deck lights
	LED cabin lights white/red
<b>Optional Extras</b>	Drinks packages
	Tender
	Paddleboards

07495 234444

info@rebelmarine.co.uk

www.rebelmarine.co.uk





# BEACH REBEL

7m Open Rib



General	
<b>Vessel Name</b>	Beach Rebel
<b>Coding</b>	SASHMA Coded - Solent Waters
<b>Call Sign</b>	2HZU6
<b>MMSI</b>	235107966
<b>Capacity</b>	6 PAX + 1 Crew
<b>LOA</b>	7m
<b>Beam</b>	2.5m
<b>Draught</b>	0.8m
<b>Machinery</b>	1 x Mercury 150HP
<b>Fuel</b>	Petrol 200L
<b>Manufacturer</b>	Shearwater Ribs
<b>Speed Cruise/Max</b>	25/36 Knots



Equipment	
<b>Layout</b>	4 suspension seats
	Seating in front of console
	Large deck with bollards & mounting points
	Large anchor and deck storage lockers
	Large full height console
	MOB recovery cradle
<b>Navigation/ Comms</b>	Simrad 12" touch screen plotter / sonar
	Simrad RS35 VHF/DSC
	Simrad NAIS-500 AIS Transponder
	Fusion Stereo System
<b>Electrical / Welfare</b>	LED navigation lights
	LED deck lights
	LED cabin lights white/red
	LED underwater lights
	LED blue strobe light
<b>Optional Extras</b>	Survey boom
	Generator
	Recovery Davit
	Rescue boat/tender
	Road trailer

07495 234444

info@rebelmarine.co.uk  
www.rebelmarine.co.uk



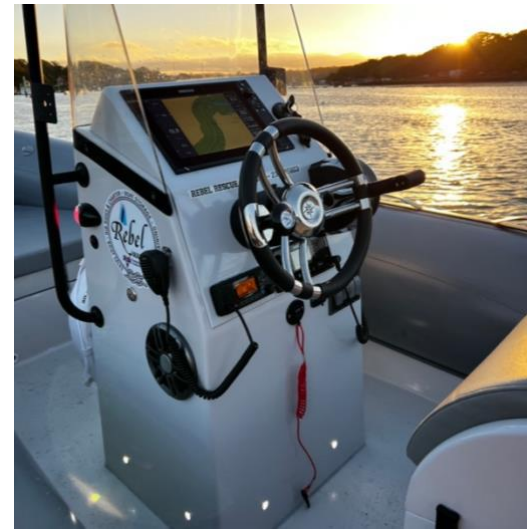


# Rebel Rescue

5.5m RIB – Safety/Rescue



General	
<b>Vessel Name</b>	Rebel Rescue
<b>Quantity</b>	1 Available
<b>Call Sign</b>	MNAG7
<b>MMSI</b>	232045803
<b>Capacity</b>	10 Persons
<b>LOA</b>	5.5m
<b>Beam</b>	2.2m
<b>Draught</b>	0.4m
<b>Machinery</b>	Mercury 80HP
<b>Fuel</b>	Petrol 60L
<b>Manufacturer</b>	Northstar
<b>Speed Max</b>	36 Knots



## Equipment

<b>Layout</b>	Built in seating
	Large deck with bollards & lifting eyes
	Large anchor and deck storage lockers
	MOB recovery cradle
	Retractable light mast
<b>Navigation/Comms</b>	Simrad 12inch NSS Evo 3 Chartplotter
	Simrad RS40-B Fixed VHF
	Simrad AIS Class B Transponder
	Icom M330GE Fixed VHF
<b>Lighting</b>	LED navigation lights
	LED deck lights
	LED Flood Light
	LED Forward 'headlights' White/Blue
	LED Aft Underwater Lights White/Blue
<b>Optional Extras</b>	LED blue strobe light
	Survey boom
	Generator
	Road trailer
	Launch Vehicle
	Mother Ship

07495 234444

info@rebelmarine.co.uk

www.rebelmarine.co.uk



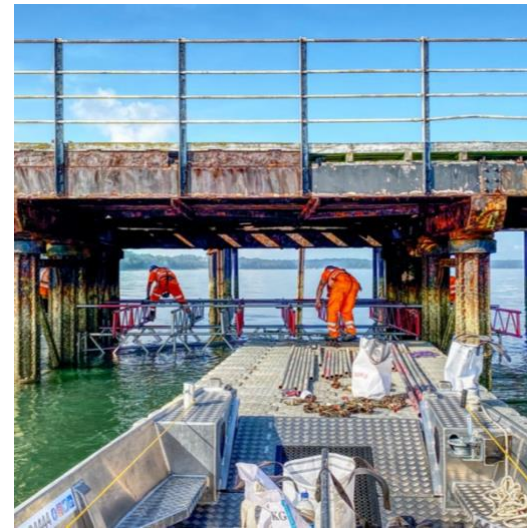


# REBEL LANDER

7m Open Landing Craft



General	
<b>Vessel Name</b>	Rebel Lander
<b>Quantity</b>	1 Available
<b>Call Sign</b>	MKEP4
<b>MMSI</b>	232038596
<b>Capacity</b>	10 Persons
<b>LOA</b>	7m
<b>Beam</b>	2.4m
<b>Draught</b>	0.2m
<b>Machinery</b>	Yamaha 80HP
<b>Fuel</b>	Petrol 40L
<b>Manufacturer</b>	HasCraft Boats
<b>Speed Max</b>	25 Knots



## Equipment

<b>Layout</b>	Landing Craft Front Loading Ramp
	Built in seating
	Push Bow Fendering
	Large deck with bollards & mounting/lifting points
	Large anchor and deck storage lockers
	Large detachable bench seat
	2 Manual coupling winches
<b>Navigation/Comms</b>	Technical Rescue Stretcher
	Simrad fixed VHF
	Simrad 9inch chartplotter
	Simrad class B AIS transponder
<b>Electrical</b>	Icom fixed VHF
	LED navigation & deck lights
<b>Optional Extras</b>	Survey boom
	Generator
	Dive Ladder
	Recovery Davit
	Road Trailer and or Launch Vehicle
	Mother Ship
LED blue strobe light	

07495 234444

info@rebelmarine.co.uk

www.rebelmarine.co.uk







# REBEL VOYAGER

6M Open Work/Safety Boat



General	
<b>Vessel Name</b>	Rebel Voyager
<b>Quantity</b>	1 Available
<b>Call Sign</b>	MRIK4
<b>MMSI</b>	232058370
<b>Capacity</b>	6 Persons
<b>LOA</b>	6m
<b>Beam</b>	2.1m
<b>Draught</b>	0.2m
<b>Machinery</b>	Honda 100HP
<b>Fuel</b>	Petrol 50L
<b>Manufacturer</b>	Aluva
<b>Speed Max</b>	25 Knots



## Equipment

<b>Layout</b>	Built in seating
	Push Bow Fendering
	Large deck with bollards & mounting/lifting points
	Large anchor and deck storage lockers
	Large bench seating
	2 Manual coupling winches
	Technical Rescue Stretcher & boarding ladder
<b>Navigation/Comms</b>	Simrad fixed VHF
	Simrad 9inch chartplotter
	Simrad class B AIS transponder
	Simrad Wind Instrument with Display
	Icom fixed VHF
<b>Electrical</b>	LED navigation, deck & flood lights
	LED blue & amber strobe lights
<b>Optional Extras</b>	Survey boom
	Generator
	Dive Ladder
	Road Trailer and or Launch Vehicle
	Mother Ship

07495 234444

info@rebelmarine.co.uk

www.rebelmarine.co.uk





# REBEL DEFENDER

6M Open Work/Safety Boat



General	
<b>Vessel Name</b>	Rebel Defender
<b>Quantity</b>	1 Available
<b>Call Sign</b>	MAXN2
<b>MMSI</b>	232048150
<b>Capacity</b>	6 Persons
<b>LOA</b>	6m
<b>Beam</b>	2.1m
<b>Draught</b>	0.2m
<b>Machinery</b>	Yamaha 70HP
<b>Fuel</b>	Petrol 50L
<b>Manufacturer</b>	Aluva
<b>Speed Max</b>	25 Knots



Equipment	
<b>Layout</b>	Built in seating
	Push Bow Fendering
	Large deck with bollards & mounting/lifting points
	Large anchor and deck storage lockers
	Large bench seating
	2 Manual coupling winches
	Technical Rescue Stretcher & boarding ladder
<b>Navigation/Comms</b>	Simrad fixed VHF
	Simrad 9inch chartplotter
	Simrad Halo 20+ Radar
	Simrad class B AIS transponder
	Simrad Wind Instrument with Display
	Icom fixed VHF
<b>Electrical</b>	LED navigation, deck & flood lights
	LED blue & amber strobe lights
<b>Optional Extras</b>	Survey boom
	Generator
	Dive Ladder
	Road Trailer and or Launch Vehicle
	Mother Ship

07495 234444

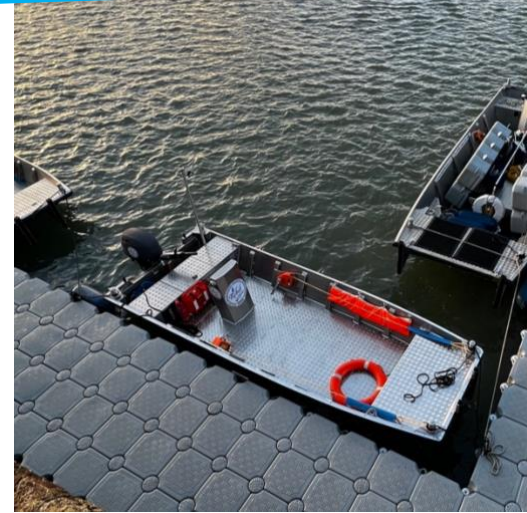
info@rebelmarine.co.uk  
www.rebelmarine.co.uk





# Rebel Six

5m Open Work/Safety Boat



General	
<b>Vessel Name</b>	Rebel Six
<b>Quantity</b>	1 Available
<b>Call Sign</b>	MMZQ3
<b>MMSI</b>	232045745
<b>Capacity</b>	6 Persons
<b>LOA</b>	5m
<b>Beam</b>	1.85m
<b>Draught</b>	0.2m
<b>Machinery</b>	Yamaha 40HP
<b>Fuel</b>	Petrol 60L
<b>Manufacturer</b>	HasCraft Boats
<b>Speed Max</b>	20 Knots



Equipment	
<b>Layout</b>	Built in seating
	Push Bow Fendering
	Large deck with bollards & mounting points
	Large anchor and deck storage lockers
	MOB recovery cradle
<b>Navigation/Comms</b>	2 Manual coupling winches
	Simrad 9inch NSX Chartplotter
	Simrad RS40-B Fixed VHF
<b>Lighting</b>	Simrad AIS Class B Transponder
	LED navigation lights
<b>Optional Extras</b>	LED deck lights
	LED blue strobe light
	Survey boom
	Generator
	Recovery Davit
	Road trailer
	Launch Vehicle
Mother Ship	

07495 234444

info@rebelmarine.co.uk  
www.rebelmarine.co.uk



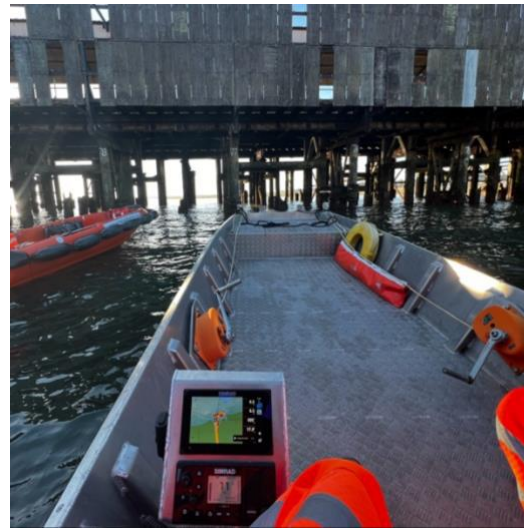


# Rebel Five

5m Open Work/Safety Boat



General	
<b>Vessel Name</b>	Rebel Five
<b>Quantity</b>	1 Available
<b>Call Sign</b>	MLYT9
<b>MMSI</b>	232043120
<b>Capacity</b>	6 Persons
<b>LOA</b>	5m
<b>Beam</b>	1.85m
<b>Draught</b>	0.2m
<b>Machinery</b>	Yamaha 40HP
<b>Fuel</b>	Petrol 60L
<b>Manufacturer</b>	HasCraft Boats
<b>Speed Max</b>	20 Knots



## Equipment

<b>Layout</b>	Built in seating
	Push Bow Fendering
	Large deck with bollards & mounting points
	Large anchor and deck storage lockers
	MOB recovery cradle
<b>Navigation/Comms</b>	2 Manual coupling winches
	Simrad 7inch NSX Chartplotter
	Simrad RS40-B Fixed VHF
<b>Optional Extras</b>	Simrad AIS Class B Transponder
	LED navigation lights
	LED deck lights
	LED blue strobe light
	Survey boom
	Generator
	Recovery Davit
	Road trailer
Launch Vehicle	
Mother Ship	

07495 234444

info@rebelmarine.co.uk

www.rebelmarine.co.uk





# Rebel Four

4m Open Work/Safety Boat



General	
<b>Vessel Name</b>	Rebel Four
<b>Quantity</b>	1 Available
<b>Call Sign</b>	MMOS3
<b>MMSI</b>	232044721
<b>Capacity</b>	6 Persons
<b>LOA</b>	4m
<b>Beam</b>	1.85m
<b>Draught</b>	0.2m
<b>Machinery</b>	Suzuki 20HP
<b>Fuel</b>	Petrol 25L
<b>Manufacturer</b>	HasCraft Boats
<b>Speed Max</b>	20 Knots



Equipment	
<b>Layout</b>	Built in seating
	Push Bow Fendering
	Large deck with bollards & mounting points
	Large anchor and deck storage lockers
	MOB recovery cradle
<b>Navigation/Comms</b>	2 Manual coupling winches
	Simrad fixed VHF
	Simrad 7inch NSX Chartplotter
<b>Electrical</b>	Simrad AIS Class B Transponder
	LED navigation lights
<b>Optional Extras</b>	LED deck lights
	LED blue strobe light
	Survey boom
	Generator
	Recovery Davit
	Road trailer
	Launch Vehicle
Mother Ship	



07495 234444

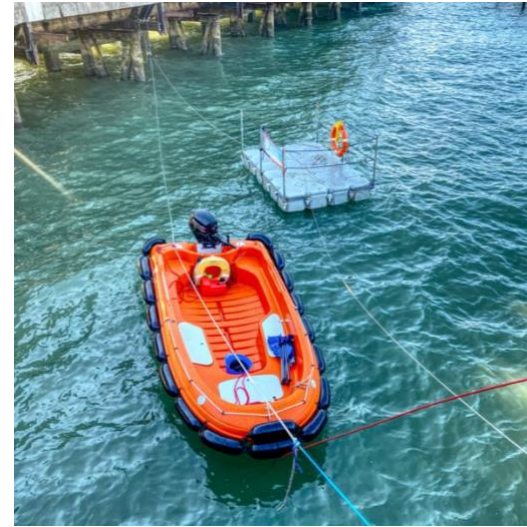
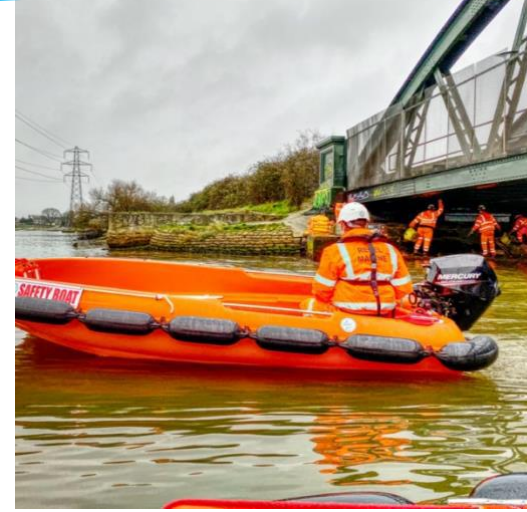
info@rebelmarine.co.uk  
www.rebelmarine.co.uk





# RIGIFLEX BOATS

4m Open Work/Safety Boats



General	
<b>Vessel Name</b>	Rigiflex Boats
<b>Quantity</b>	2 Available
<b>Call Sign</b>	N/A - Handheld VHF
<b>MMSI</b>	N/A - Handheld VHF
<b>Capacity</b>	7 Persons
<b>LOA</b>	4m
<b>Beam</b>	1.9m
<b>Draught</b>	0.3m
<b>Machinery</b>	Mercury 20HP
<b>Fuel</b>	Petrol 20L
<b>Manufacturer</b>	Rigiflex Boats
<b>Speed Max</b>	16 Knots



Equipment	
<b>Layout</b>	Built in seating
	Seating in front of console
	Large deck with cleats & mounting points
	Large anchor and deck storage lockers
	MOB recovery cradle
<b>Navigation/Comms</b>	Icom handheld VHF
	Handheld GPS
	Flares
<b>Optional Extras</b>	LED navigation lights
	LED deck lights
	LED blue strobe light
	Survey boom
	Generator
	Recovery Davit
	Road trailer
	Push Bow
Launch Vehicle	
Mother Ship	

07495 234444

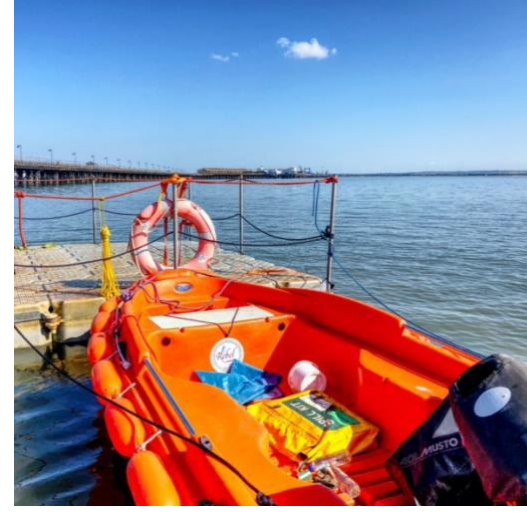
info@rebelmarine.co.uk

www.rebelmarine.co.uk

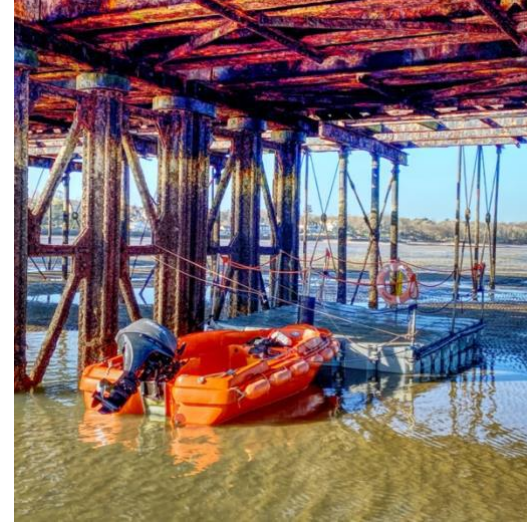




# RIGIFLEX BOATS 3.6m Open Work/Safety Boats



General	
<b>Vessel Name</b>	Rigiflex Boats - 2 Available
<b>Quantity</b>	2 Available
<b>Call Sign</b>	N/A - Handheld VHF
<b>MMSI</b>	N/A - Handheld VHF
<b>Capacity</b>	6 Persons
<b>LOA</b>	3.6m
<b>Beam</b>	1.68m
<b>Draught</b>	0.3m
<b>Machinery</b>	Suzuki 20HP
<b>Fuel</b>	Petrol 20L
<b>Manufacturer</b>	Rigiflex Boats
<b>Speed Max</b>	16 Knots



## Equipment

<b>Layout</b>	Built in seating
	Seating in front of console
	Large deck with cleats & mounting points
	Large anchor and deck storage lockers
	MOB recovery cradle
<b>Navigation/ Comms</b>	Icom handheld VHF
	Handheld GPS
	Flares
<b>Optional Extras</b>	LED navigation lights
	LED deck lights
	LED blue strobe light
	Survey boom
	Generator
	Recovery Davit
	Road trailer
	Push Bow
	Launch Vehicle
Mother Ship	

07495 234444

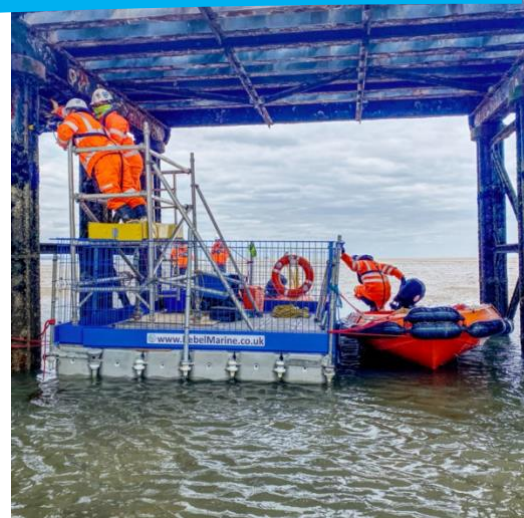
info@rebelmarine.co.uk  
www.rebelmarine.co.uk





# MODULAR PONTOONS

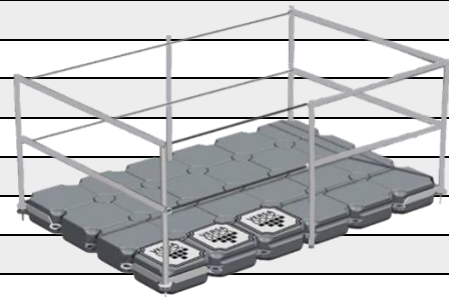
VersaDock



General	
<b>Name</b>	VersaDock Modular Pontoons
<b>Capacity</b>	Varies dependent on float type and layout
<b>Size</b>	Can be built to any size and shape
<b>Applications</b>	Film & Television
	Survey & Inspection
	Temporary Mooring
	Repair & Maintenance
	Temporary Walkways
	Plant & Machinery
	Media & Events
	Restricted Access
Scaffold Platform	



Equipment	
<b>Transport</b>	In-house transport by road
	In-house transport by water
<b>Optional Extras</b>	Hand rails
	Ladder
	Fully Foldable Marine Crane
	Anchors
	Outboard Bracket
	Winch
	Survey boom
	Generator
	Road trailer
	Spud legs
	Launch Vehicle
	Mother Ship
	Rescue/safety boat
	LED navigation lights
LED deck lights	



07495 234444

info@rebelmarine.co.uk

www.rebelmarine.co.uk



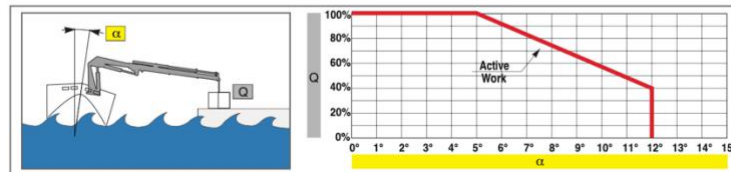
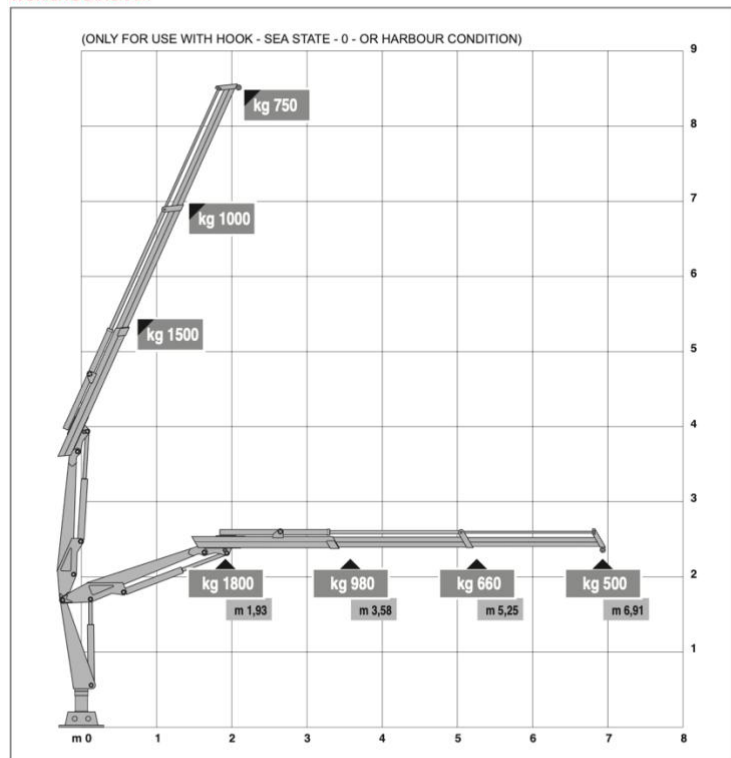




# MODULAR CRANE PONTOON VersaDock



FULLY FOLDABLE CRANE  
**HLM 3-2S** MODEL



Huge variety of uses such as Heavy Lifting, Piling, lifting pontoon spud legs and general marine works. Ultra-shallow draft allows us to access places larger multicats cannot reach. Can be mobilised by water or dismantled for road transport to site, crane can self-load and service its working deck and spud legs.

General	
<b>Vessel Name</b>	Rebel Barge
<b>Quantity</b>	Multiple Available
<b>Capacity</b>	24 Tonnes
<b>LOA</b>	12m
<b>Beam</b>	6m
<b>Draught</b>	0.15m
<b>Machinery</b>	Twin Electric Spud Leg Motors
<b>Crane</b>	Heila HLM 3-2S & Powerpack
<b>Manufacturer</b>	VersaDock/Heila/Rebel Marine



## Equipment

<b>Layout/Equipment</b>	1 x Foldable Marine Crane with Aux QR connections
	2 x 8m spud legs
	2 x Electric spud lifters
	Moonpool
	Pile Driving Frame
	Hydraulic Powerpack
	Handrailing/Cleats & Towing/Cargo Eyes
	Heavy Duty Fendering
	2 x Heavy Duty Loading Ramps
	Life Saving Equipment
Dive Ladder	
<b>Electrical</b>	LED navigation lights
	LED deck lights
<b>Optional Extras</b>	Hydraulic Grab Bucket and Rotator
	Hydraulic Crane Winch
	Generator
	Qualified Operator
	Swim End
	Workshop/Store



07495 234444

info@rebelmarine.co.uk  
www.rebelmarine.co.uk





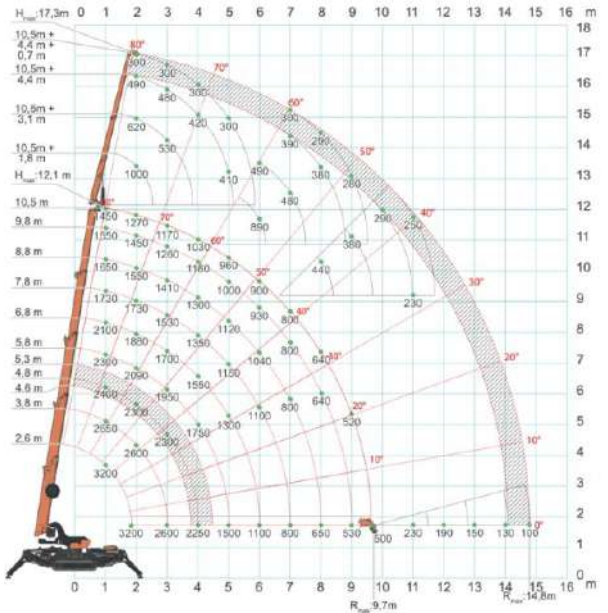
# Spider Crane Pontoon

Hybrid electric 



The most intuitive mini crane of all time, able to guarantee high level performance. Important features include the 1 tonne hydraulic jib, the maximum height of which, at 17.3 metres, can be compared to that of a higher category of crane. This spider crane can be put on a trailer and towed by a 4x4. Tracking itself onto the deck of our modular pontoons gives us the most flexible lifting solution afloat. Pontoons can be built to any size and shape, including moon pools. With spud legs, brackets and other accessories, we can tailor a marine package to suit.

General	
<b>Vessel Name</b>	Rebel Spider Crane on a Pontoon
<b>Length</b>	3255mm
<b>Width</b>	770mm (1050mm tracks extended)
<b>Capacity</b>	3,200kg
<b>Manufacturer</b>	Jekko



## Features

<b>Details</b>	Compact, strong and robust
	Precisely manoeuvrable
	4000kg 125m winch
	Extending tracks
	Hybrid with electric drive
	Pick and carry duties
	Non-marking tracks
	230v and 110v charging
	Radio remote control
	LED lights
<b>Attachments/ Optional Extras</b>	Virtual Walls
	Adjustable head and hydraulic fly jib
	360° Endless Slew
	Variable Outriggers
	17.3m max hoist height
	Heavy Duty Loading Ramps
	Glass and Steel Manipulators/Grabs
	Operator & Slinger/Signaller
	Grass / Bog Mats
	Crane trailer & bespoke lifting equipment

07495 234444

info@rebelmarine.co.uk

www.rebelmarine.co.uk

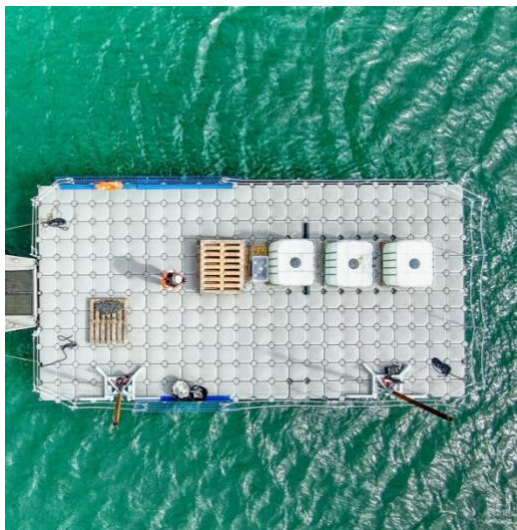




# REBEL SPUD LEG BARGE Modular Pontoon



General	
<b>Vessel Name</b>	Rebel Spud Leg Barge
<b>Quantity</b>	Multiple Available
<b>Call Sign</b>	N/A
<b>MMSI</b>	N/A
<b>Capacity</b>	24 Tonnes
<b>LOA</b>	12m
<b>Beam</b>	6m
<b>Draught</b>	0.2m
<b>Machinery</b>	Twin Electric Spud Leg Motors
<b>Fuel</b>	N/A
<b>Manufacturer</b>	VersaDock



Equipment	
<b>Layout/Equipment</b>	2 x 8m spud legs
	2 x Electric spud lifters
	Moonpool
	Pile Driving Frame
	Handrailing
	Cleats & Towing/Cargo Eyes
	Heavy Duty Fendering
	2 x Heavy Duty Loading Ramps
	Life Saving Equipment
	Stiffening Beams
<b>Electrical</b>	LED navigation lights
	LED deck lights
<b>Optional Extras</b>	Foldable Marine Crane
	Survey boom
	Generator
	Dive Ladder
	Recovery Davit
	Swim End
	Welfare Cabins
Workshop/Store	

07495 234444

info@rebelmarine.co.uk  
www.rebelmarine.co.uk

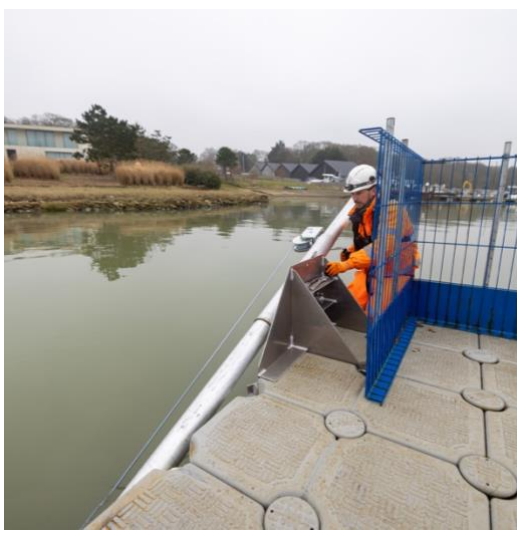




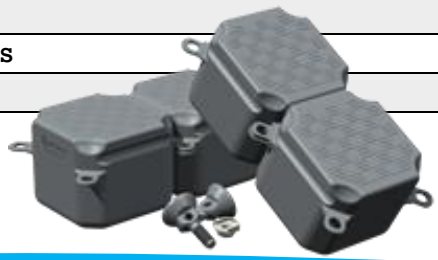
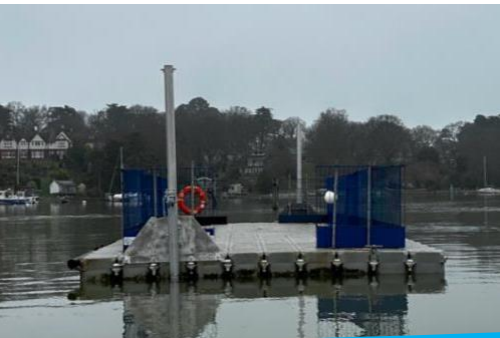
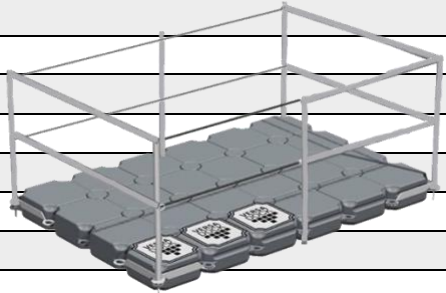
# MANUAL FOLDING SPUD LEGS



General	
<b>Name</b>	Manual Folding Spud Legs
<b>Length</b>	5m, 7.5m or 10m
<b>Modular Pontoon</b>	Can be built to any size and shape
<b>Applications</b>	Film & Television
	Survey & Inspection
	Temporary Mooring
	Repair & Maintenance
	Temporary Walkways
	Plant & Machinery
	Media & Events
	Restricted Access
Scaffold Platform	



Equipment	
<b>Transport</b>	In-house transport by road
	In-house transport by water
<b>Optional Extras</b>	Hand rails
	Ladder
	Fully Foldable Marine Crane
	Anchors
	Outboard Bracket
	Winch
	Survey boom
	Generator
	Road trailer
	Crane
	Launch Vehicle
	Mother Ship
	Rescue/safety boat
	LED navigation lights
	LED deck lights



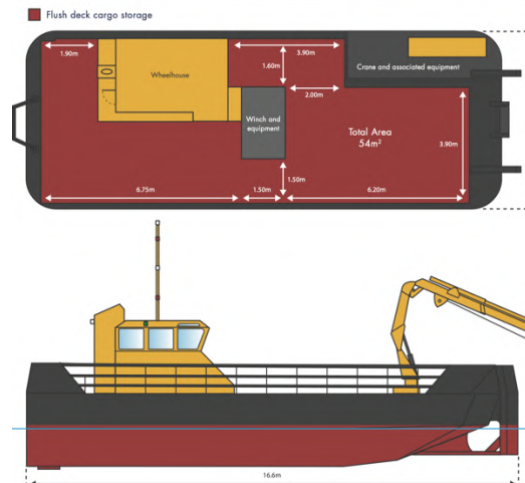
07495 234444

info@rebelmarine.co.uk  
www.rebelmarine.co.uk





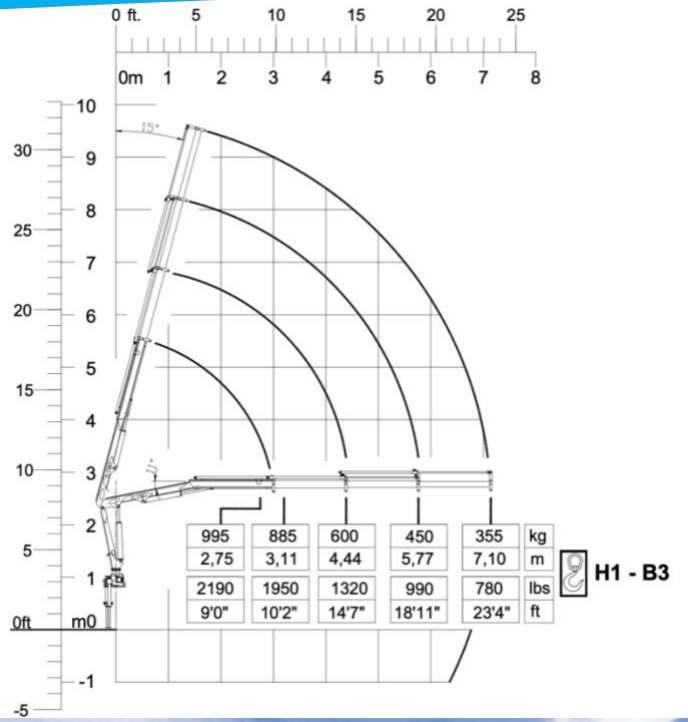
General	
<b>Vessel Name</b>	Seaclear
<b>Quantity</b>	1 Available
<b>Call Sign</b>	2CWH2
<b>MMSI</b>	235076322
<b>Capacity</b>	6 Persons / Deck Load 28t
<b>LOA</b>	16.6m
<b>Beam</b>	6m
<b>Draught</b>	1.7m
<b>Machinery</b>	2 x Doosan L136TI (460HP total)
<b>Bollard Pull</b>	6t
<b>Manufacturer</b>	SMS
<b>Speed Max</b>	8 Knots



Equipment	
<b>Layout</b>	Marine Knuckle Boom Crane
	Push Bow Fendering
	Large open deck with bollards & mounting points
	Deck winch hydraulic 10 tonne
	Bow roller
<b>Navigation/Comms</b>	Tow hook
	Raymarine Chartplotter
	Raymarine DSM300 Sonar
	Raymarine ST60+
	Raymarine Quantum Radar
<b>Electrical</b>	Icom fixed VHF
	LED navigation, deck & flood lights
<b>Optional Extras</b>	LED blue strobe light
	Survey boom
	Welfare Cabin
	Dive Ladder
	Dredge Plough
	Rear mounted A frame
Workboat Tender	



# CRANE TRAILER



Ideal for delivering our vessels, pontoons and equipment to sites and getting to those hard-to-reach places. This trailer mounted crane is unique with its clever dolly system that lets it roll along the bed of the trailer. This allows it to be stowed over the axles when the trailer is empty to keep the nose weight of the trailer safe and well under the legal limit.

General	
<b>Vessel Name</b>	Rebel Crane Trailer
<b>LOA</b>	7m
<b>Beam</b>	2.3m
<b>Crane</b>	Copma 35 & Powerpack
<b>Manufacturer</b>	Copma/Moose Cranes



Features	
<b>Crane Layout/Equipment</b>	Foldable Crane
	Track mounted crane dolly to roll up & down the bed
	Radio Remote Control
	Adjustable and selectable height & slew restrictors
	Hydraulic stabilisers
	Hydraulic Powerpack
<b>Trailer Layout/Equipment</b>	Sensors/alarm on locking pins
	Front and rear stabilisers
	2 x Heavy Duty Loading Ramps
	Storage boxes
	Lashing eyes
	LED trailer lights
	LED flood lights
2 x Heavy Duty Loading Ramps	
<b>Optional Extras</b>	Hydraulic Crane Winch
	Generator
	Qualified Operator
	Electric Trailer Winch
	Welfare Cabins and Workshop/Store
	Lifting beams and bespoke lifting equipment

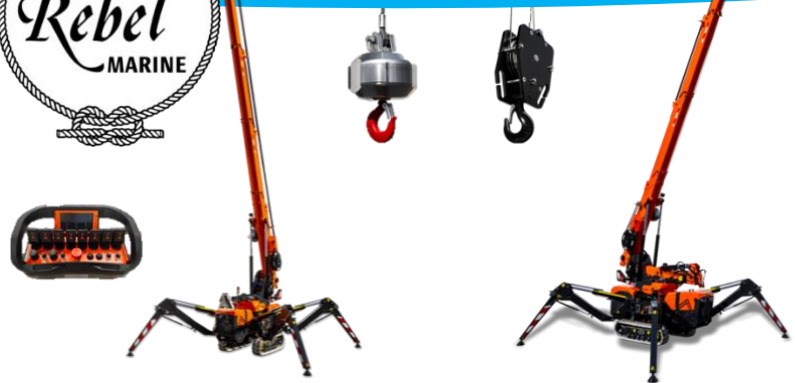
07495 234444

info@rebelmarine.co.uk  
www.rebelmarine.co.uk

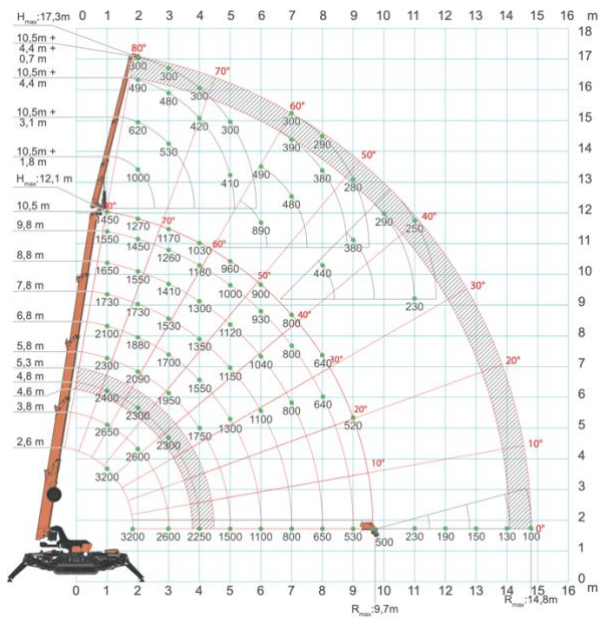




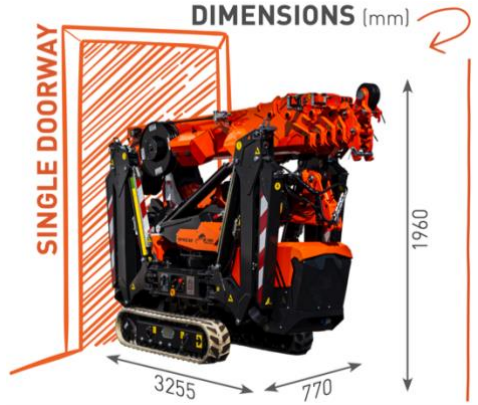
# Tracked Spider Crane Hybrid electric



The most intuitive mini crane of all time, able to guarantee high level performance. The largest mini crane in its category able to pass through a single door, it offers substantial lifting capacity in relation to its weight, dimensions. Important features include the 1 tonne hydraulic jib, the maximum height of which, at 17.3 metres, can be compared to that of a higher category of crane. This spider crane can be put on a trailer and towed by a 4x4. Tracking itself onto the deck of our modular pontoons gives us the most flexible lifting solution afloat.



General	
<b>Vessel Name</b>	Rebel Spider Crane – SPX532
<b>Length</b>	3255mm
<b>Width</b>	770mm (1050mm tracks extended)
<b>Capacity</b>	3,200kg
<b>Manufacturer</b>	Jekko



## Features

<b>Details</b>	Compact, strong and robust
	Precisely manoeuvrable
	4000kg 125m winch
	Extending tracks
	Hybrid with electric drive
	Pick and carry duties
	Non-marking tracks
	230v and 110v charging
	Radio remote control
	LED lights
<b>Attachments/ Optional Extras</b>	Virtual Walls
	Adjustable head and hydraulic fly jib
	360° Endless Slew
	Variable Outriggers
	17.3m max hoist height
	Heavy Duty Loading Ramps
	Glass and Steel Manipulators/Grabs
	Operator & Slinger/Signaller
	Grass / Bog Mats
	Crane trailer & bespoke lifting equipment



07495 234444

info@rebelmarine.co.uk

www.rebelmarine.co.uk

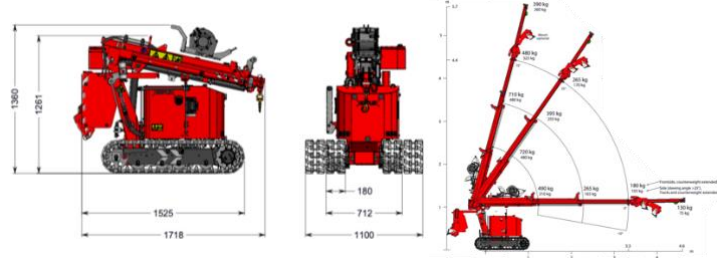




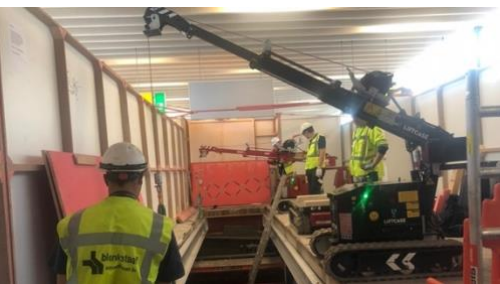
# Tracked Compact Crane 100% electric



With its small dimensions, the C1e is easy to transport. Manoeuvring in tight spaces no other machine can get to. Ideal for indoor operations, crane also fits in a lift with ease. This is handy at construction sites and in industrial environments. The Hoeflon C1e is a fully electric mini- crane. That means CO<sub>2</sub> neutrality when you work with this machine, in more and more places, this is a firm requirement. Little powerhouse. At 1,030 kg, the C1e can definitely be called that getting the most out of a 1-tonne mini-crane. Can be transported with a standard commercial van.



General	
<b>Vessel Name</b>	Rebel Tracked Crane – C1E
<b>Length</b>	1718mm
<b>Width</b>	712mm (1100mm tracks extended)
<b>Capacity</b>	720kg
<b>Manufacturer</b>	Hoeflon



## Features

<b>Details</b>	Compact, strong and robust
	Precisely manoeuvrable
	500kg 25m winch
	Extending tracks and counterweight
	Silent thanks to electric drive
	Pick and carry duties
	Non-marking tracks
	230v and 110v charging
	Radio remote control
	LED lights
<b>Attachments/ Optional Extras</b>	Central lifting eye
	Adjustable head and fly jib
	136° Slew, Boom -10° to 75°
	Removable counterweight
	5.6m max hoist height
	Heavy Duty Loading Ramps
	Operator
	Slinger/Signaller
	Grass / Bog Mats
	Crane trailer & bespoke lifting equipment

07495 234444

info@rebelmarine.co.uk

www.rebelmarine.co.uk

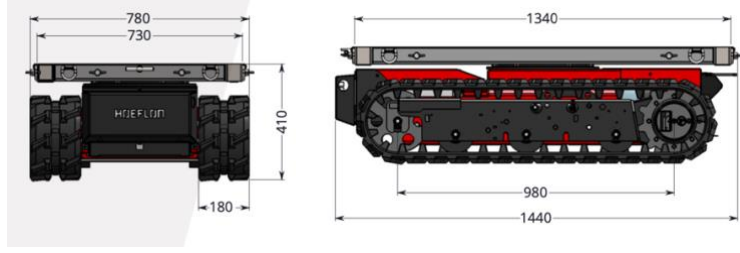






# Tracked Carrier TC1

100% electric 



The TC1 carrier is the solution for transport of long, heavy materials, equipment and pontoons at a project site. The carrier is compact and just 80 cm wide, and items can be placed on it in the length or width. The radio remote controlled carrier is perfect for transporting material, such as steel beams, through small access doors and less easily accessible areas. No more heavy lifting for your personnel. Ergonomic, efficient and safe!

General	
<b>Vessel Name</b>	Rebel Tracked Carrier – TC1
<b>Length</b>	1450mm
<b>Width</b>	800mm
<b>Capacity</b>	1200kg
<b>Manufacturer</b>	Hoeflon



## Features

<b>Details</b>	Compact, strong and robust
	Precisely manoeuvrable
	Easy to attach load
	Extendible platform
	Silent thanks to electric drive
	Swivel platform
	Non-marking tracks
	230v and 110v charging
	Radio remote control
	LED lights
<b>Attachments/ Optional Extras</b>	Lashing eyes
	Can carry a load of 1200kg. Thanks to the crawler tracks, the carrier can easily drive over a rough surface yet causes no damage to finished floors.
	Tow bar / Ball Hitch
	Heavy Duty Loading Ramps
	Operator
	Electric Winch
Grass / Bog Mats	
Crane trailer & bespoke lifting equipment	

07495 234444

info@rebelmarine.co.uk

www.rebelmarine.co.uk





# Solar Tower Light TL55 100% electric



The SMC TL55 Solar meets the demand for a sustainable, environmentally friendly and low maintenance lighting tower. Reliable, robust and offering instant light from four 60W LED lamps, the SMC TL55 Solar does not compromise on power or quality. With both battery and mains supply provision, it offers flexible options for all applications on site with an indefinite run time.

General	
<b>Vessel Name</b>	Rebel Solar Tower Light – TL55
<b>Length</b>	2585mm
<b>Width</b>	1450mm
<b>Weight</b>	1160kg
<b>Manufacturer</b>	SMC



Features	
<b>On-Board Charger</b>	40A / 230V AC
<b>Batteries</b>	6
<b>Solar Panels</b>	4
<b>Voltage</b>	24V
<b>Max Run Time Battery</b>	Over 500hrs with SMC PIR/Auto dimming system
<b>Max Run Time Inc Solar</b>	Indefinite (dependent on quality of sunlight and based on 8hrs operation within 24hrs)
<b>Charge Time 230v</b>	11 Hours
<b>Noise Level</b>	0 dB
<b>Mast Raise/Lower Time</b>	12 / 18 seconds
<b>Mast Rotation</b>	355 degrees
<b>Max Wind Speed</b>	100kph / 60 mph
<b>Lamp Spec</b>	4 x 60W LED
<b>Lumens</b>	32,000
<b>Dusk 'till Dawn</b>	Standard Control/Timer/Sensor
<b>Tow</b>	Road Towable
<b>Stabilisers</b>	4 x wind down legs
<b>Size Deployed</b>	L 2585 x W 4135 x H 5500mm



07495 234444  
[info@rebelmarine.co.uk](mailto:info@rebelmarine.co.uk)  
[www.rebelmarine.co.uk](http://www.rebelmarine.co.uk)





# 'Land Fleet'

## Our Road Going Workhorses



Ideal for delivering our vessels, pontoons and equipment to sites and getting to those hard-to-reach places. Our fleet of vehicles and plant mean we are able to transport any of our kit to sites across the country in house, meaning we are not reliant on third parties. Our diverse range of kit, allows us to react and adapt to our client's needs.

We have 11 trailers in the fleet, from hydraulic tilting flatbeds, roller boat trailers to a trailer mounted crane and more! Our JCB telehandler is the workhorse of our yard, busy loading & unloading deliveries as well as lifting boats in/out of the water from our quayside and slipway.



07495 234444

[info@rebelmarine.co.uk](mailto:info@rebelmarine.co.uk)

[www.rebelmarine.co.uk](http://www.rebelmarine.co.uk)





# Hovercraft

By Griffon Hoverwork

6.8m Hovercraft



General	
<b>Vessel Name</b>	Griffon 380TD
<b>Coding</b>	MCA Category 2 – 60 miles day & night
<b>Call Sign</b>	-
<b>MMSI</b>	-
<b>Capacity</b>	5 PAX + 1 Crew
<b>LOA</b>	6.8m
<b>Beam</b>	3.76m
<b>Draught</b>	N/A
<b>Machinery</b>	1 x VW 63kW 1 x Briggs & Stratton
<b>Fuel</b>	Diesel 60L
<b>Manufacturer</b>	Griffon Hoverwork
<b>Speed Max</b>	28 Knots



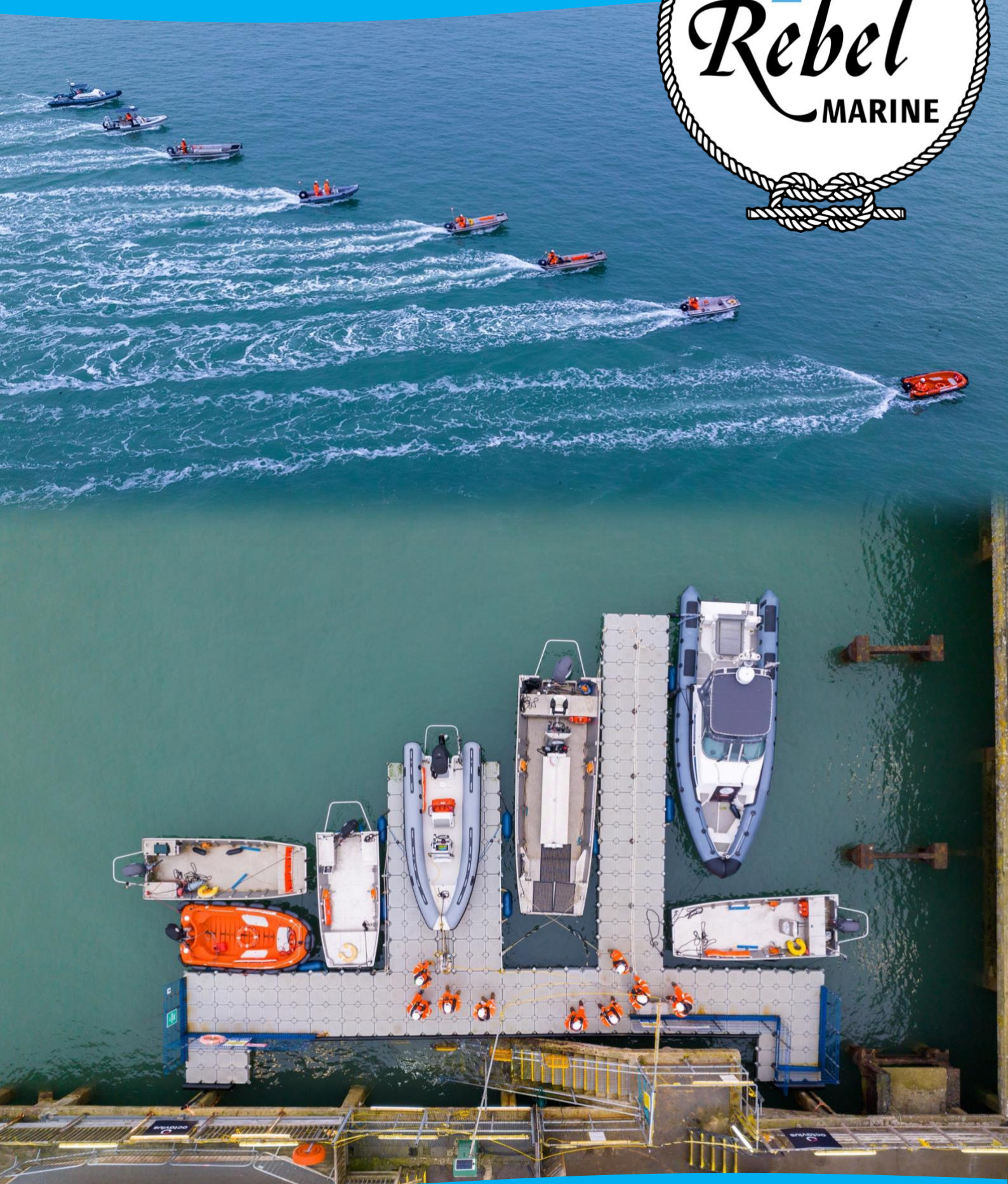
Equipment	
<b>Layout</b>	Amphibious
	Seating for 6
	Rigid Aluminium Hull
	Inflatable Sponsons
	Landing pads on the underside
	Heavy Duty Skirt
	Lifting Eyes
<b>Navigation/ Electrical</b>	Road Trailer
	Nav Lights
	Orange Strobe
	4 x Bilge Pump
<b>Optional Extras</b>	H/H VHF/DSC
	Work Lights
	Search Light
	Survey Equipment
	Launch Vehicle
	Mothership

07495 234444

info@rebelmarine.co.uk  
www.rebelmarine.co.uk



Checkout our latest showreel  
<https://youtu.be/EipLs7lvvmI>



07495 234444

[info@rebelmarine.co.uk](mailto:info@rebelmarine.co.uk)

[www.rebelmarine.co.uk](http://www.rebelmarine.co.uk)

